

HP 131 GEAR PUMP DEMONSTRATION UNIT, Computer Interface



Photograph includes optional equipment

GENERAL DESCRIPTION:

This is a bench top unit for studying the gear pump characteristics with data display and analysis by computer.

The unit consists of an industrial gear pump with a motor, a PVC storage tank on a steel base, sensors and software.

It is to be used with oil or glycol. HP 104 Advanced inverter with computer interface unit is required but separately supplied.

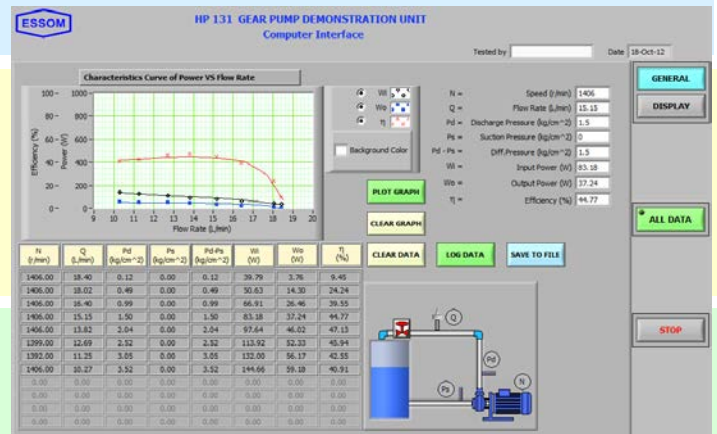
Instruction manual is also included.

EXPERIMENT CAPABILITIES:

- Flow rate vs head at various speeds.
- Pump input, output and overall efficiency at various speeds.

TECHNICAL DATA:

- Pump ratings
 - Maximum flow rate : 20 Lpm
 - Maximum head : 25 m water
 - Built-in pressure relief valve.
- Speed control : HP104 (separately supplied)
- Sensors with digital display : Pressures for pump suction and discharge
: Speed and motor input power
: Flow rate
- Software for data display and analysis by computer (separately supplied).



OPTIONAL EQUIPMENT:

- Liquid temperature sensor
- Pump with different head and flow rate instead of standard pump
- HP 104 Advanced inverter with computer interface unit (required accessory).
- HP 131-060 Computer control
This includes computer interface unit with flow control motor, HP 104 Advance inverter and additional software function for control by computer (separately supplied).
- Other optional equipment, please contact manufacturer (essom@essom.com)

Net (unpacked) shipping dimensions WxLxH : 50 x 108 x 75 cm
 Net weight : Approx. 40 kg

