

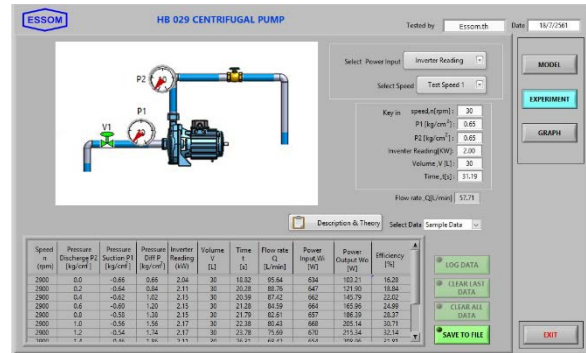
## HYDRAULICS BENCH ACCESSORIES

This apparatus is to be used with Hydraulics Bench such as HB100 or HB100N (both are separately supplied) for a water supply and flow measurement. Instruction manual is also included.

### HB 029 PUMP TEST APPARATUS



*Photograph includes optional equipment*



### GENERAL DESCRIPTION:

This equipment is designed to study of centrifugal pump characteristics at various speed. It is to be used with Hydraulics Bench i.e. HB100 or HB100N (separately supplied).

The pump with motor is mounted on the Hydraulics Bench which acts as a service module. An advanced inverter controls speed as well as indicating speed and input power. Pump hoses with half unions are used to connect the pump with the Hydraulics Bench. Pressure gauges are installed at pump suction with half union and also at pump discharge. The pump draws water from the Hydraulics Bench storage tank via a suction hose with a strainer and delivers flow to the Hydraulics Bench measuring tank (HB100) or flow digital display (HB100N).

### EXPERIMENT CAPABILITIES:

- Performance and characteristics of pump

### TECHNICAL DATA:

- Pump : Maximum flow approximately 80 Lpm.  
: Maximum head approximately 18 m.
- Speed control : Advanced inverter.
- Pressure gauge : Suction.
- Software for data display and analysis by computer (separately supplied).
- Power supply : 220 V, 1 Ph, 50 Hz or as required

### OPTIONAL EQUIPMENT:

- HP002 Pressure gauge at pump discharge
- HP011 Pressure digital display
- HB029R Reciprocating pump instead of standard pump
  - Pump ratings : Maximum flow rate approximately 15 Lpm  
: Maximum head approximately 30 m.
  - Motor : 0.37 kW, 220 V, 1 Ph, 50 Hz.
- Other optional equipment, please contact manufacturer (essom@essom.com)

**Net (unassembled) Shipping Dimensions WxLxH** : 36 x 75 x 50 cm  
**Net Weight** : Approx. 20 kg