

MP 201 SINGLE STAGE AIR COMPRESSOR TEST SET, Air Cooled.



Photograph includes optional equipment

GENERAL DESCRIPTION

The test set is for studying the single stage reciprocating air compressor characteristics.

An industrial type compressor is driven via a vee-belt by a motor with an advanced inverter. The air receiver has, safety valves, pressure switch, a drain valve and a discharge valve. The unit is equipped with necessary measuring instruments and is on wheels.

Instruction manual is also included.

EXPERIMENT CAPABILITIES

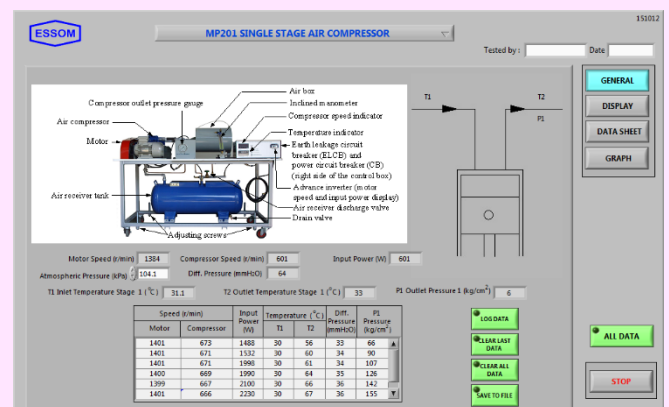
- Compressor characteristics e.g. volumetric efficiency, isothermal efficiency, pressure ratio, temperature ratio.
- Effect of compressor speed.

TECHNICAL DATA

- Compressors:
 - Type : Air-cooled, single stage
 - Displacement : 300 ml or approximate equal
 - Maximum working pressure : 8 kg/cm²
- Air receiver : Approx. 90 L or as requested
- Measuring instruments
 - Pressure : Pressure gauge at compressor outlet
 - Air flow rate : Inlet orifice plate with air box and inclined water manometer
0-450 mm x 1 mm graduation, multiple slope 1:10, 1:5, 1:2 and 1:1
 - Motor input power : Advanced inverter
 - Sensors with digital display : Speed for compressor
 - : Temperatures for ambient and outlet air
- Accessory : Barometer
- Software for data display and analysis by computer (separately supplied).
- Power supply : 220V 1Ph 50 Hz. Other power supply is available on request.

OPTIONAL EQUIPMENT

- MP 100-011 Differential pressure digital display.
- MP 200-030 P-V diagram set consisting of pressure sensor with signal converter and software for demonstration of the diagram on computer.
- MP 201-002A Motor dynamometer with an inverter, torque and speed digital display instead of advanced inverter for measurement of TRUE input power.
- MP 201-050 Computer Interface
Sensors with computer interface unit for key data acquisition instead of analog data measuring instruments.
This includes computer interface unit with pressure sensor and differential pressure sensor instead of pressure gauge.
- MT 501-015A Air flow digital display instead of inlet air box and orifice plate.
- Other accessories can be supplied on request.



Net (unpacked) shipping dimensions WxLxH

: 80 x 135 x 135 cm

Net weight

: Approx. 160 kg