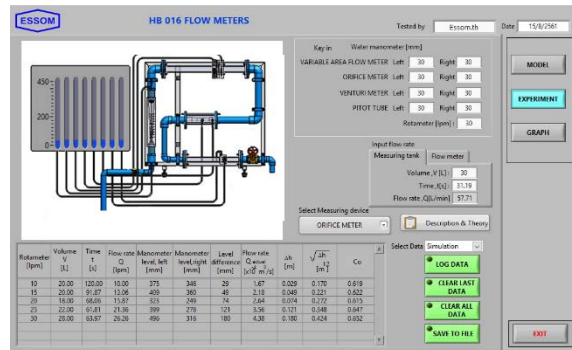


## HYDRAULICS BENCH ACCESSORIES

This apparatus is to be used with Hydraulics Bench such as HB100 or HB100N (both are separately supplied) for a water supply and flow measurement. Instruction manual is also included.

### HB 016 FLOW METERS



#### GENERAL DESCRIPTION:

This equipment determines the coefficients of discharge for different flow measuring devices. It is to be used with Hydraulics Bench i.e. HB100 or HB100N (separately supplied).

The equipment consists of a Venturi tube, an orifice plate, and a Pitot tube, made from a clear acrylic, connected in series. Pressure drop across each device is connected to a water manometer bank with a vent valve and a hand air pump.

Instruction manual is also included.

#### EXPERIMENT CAPABILITIES:

- Accuracy of different flow meters
- Losses and  $k$  value
- Calculation of the coefficient of discharge

#### TECHNICAL DATA:

- Variable area flow meter : 1 ea.
- Venturi tube : 1 ea.
- Orifice plate : 1 ea.
- Pitot tube : 1 ea.
- Water manometer : 1 ea.
- Software for data display and analysis by computer (separately supplied).

#### OPTIONAL EQUIPMENT:

- ISA nozzle instead of orifice plate or Pitot tube
- Other optional equipment, please contact manufacturer (essom@essom.com)

**Net (unassembled) Shipping Dimensions WxLxH** : 36 x 72 x 78 cm  
**Net Weight** : Approx. 16 kg