

MP 121 AXIAL FLOW FAN DEMONSTRATION UNIT, Computer Interface

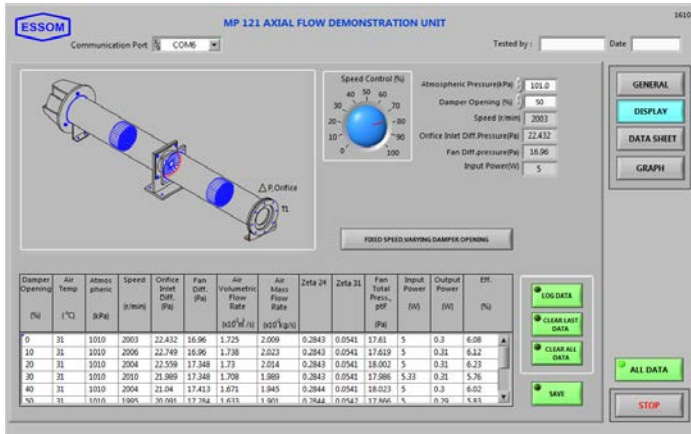
GENERAL DESCRIPTION

This is a bench top unit for a study of axial flow fan characteristics with data analysis by computer.

The unit consists of a small axial flow fan with DC motor on a steel base, a speed control switch, inlet and outlet ducts, an interface box, sensors, and software. The box includes power supply for the fan, display and computer interface unit. It also provides interface ports to sensors and computer.

The unit is to be use with a computer (separately supplied).

Instruction manual is also included.



EXPERIMENT CAPABILITIES

- Flow rate VS pressure
- Fan input, output and overall efficiency.
- Effect of speed on fan performance.

TECHNICAL DATA

- Fan ratings :
 - Maximum flow rate : 2.5 m³/min
 - Maximum pressure : 0.10 kPa
- Inlet duct : Transparent with flow straighteners and inlet orifice
- Outlet duct : Transparent with flow straighteners and damper
- Sensors with digital display :
 - : Differential pressure across the fan
 - : Differential pressure at the orifice
 - : Temperature of inlet air
 - : Motor input power
 - : Fan speed
 - : Barometer
- Accessory
- Computer interface unit
- Software for data display and analysis by computer (separately supplied).
- Power supply : 220 V, 1 Ph, 50 Hz. Other power supply is available on request.

OPTIONAL EQUIPMENT

- MP 121-060 Computer Control
This includes damper, control motor and software for data display, analysis and control by computer (separately supplied).

Net (unpacked) shipping dimensions WxLxH : 57 x 122 x 33 cm
Net weight : Approx. 30 kg