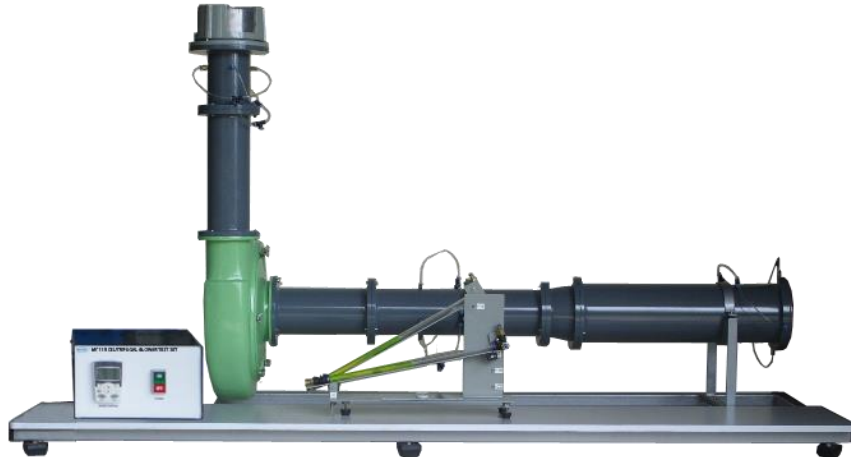


MP 119 CENTRIFUGAL BLOWER TEST SET

GENERAL DESCRIPTION

This is a bench top unit for studying the centrifugal blower characteristics.

The unit consists of an industrial type centrifugal blower with a motor and an inverter, inlet and outlet ducts with flow straighteners, a damper, and measuring instruments. The design is based on BS 848 and ISO 1042. Extra blades are provided for comparison study.



TYPICAL TESTS

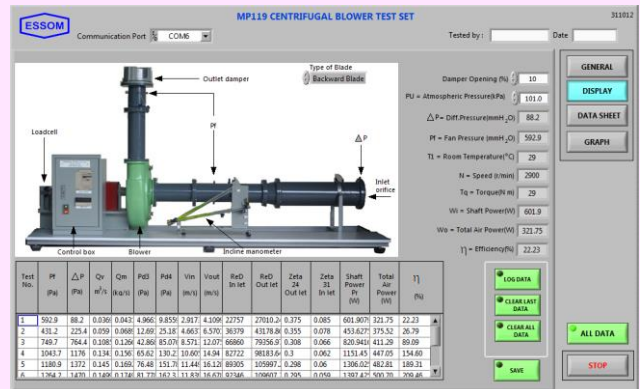
- Inlet and discharge pressures vs blower speed.
- Flow rate vs speed.
- Blower input, output and efficiency.
- Comparison of backward, radial, and forward blade impellers.

TECHNICAL DATA

- Blower rating at 2900 rpm :
 - Maximum flow rate (unchoked) : Over 15 m³/min.
 - Maximum head (fully choked) : Over 150 mm. water.
- Inlet duct with flow straightener.
- Outlet duct with flow straightener and damper.
- Speed control : Advanced inverter.
- Measuring instruments :
 - Air flow rate : Inlet orifice plate or Venturi nozzle using inclined water manometer.
 - Differential pressures : Twin inclined water manometers (one for airflow rate), 0-450 mm x 1 mm graduation, multiple slope 1:10, 1:5, 1:2 and 1:1.
 - Blower speed and motor input power : Advanced inverter.
 - Temperature : Thermometer.
- Accessories : 2 extra impellers with radial and forward blade designs and barometer.
- Power supply : 220 V, 1 Ph, 50 Hz. Other power supply is available on request.

OPTIONAL EQUIPMENT

- MP 100-008 Venturi nozzle for flow rate measurement.
- MP 100-009 Travelling pitot tube for flow rate measurement.
- MP100-010A Anemometer for flow rate measurement instead of orifice plate or Venturi nozzle and inclined water manometer.
- MP 119-050 Computer Interface
This includes , computer interface unit, and software for data display and analysis by computer (separately supplied).



Net (unpacked) shipping dimensions WxLxH
Net weight

: 85 x 245 x 75 cm
: Approx. 160 kg

